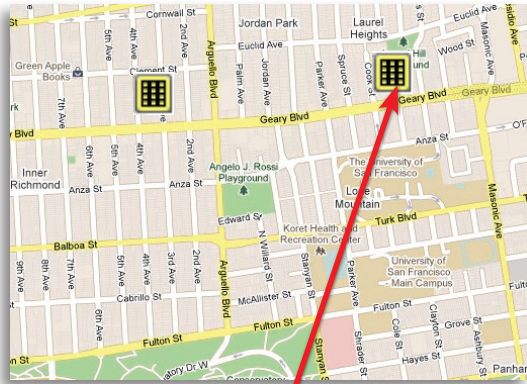
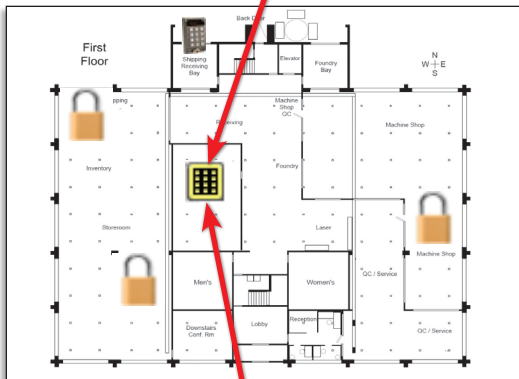


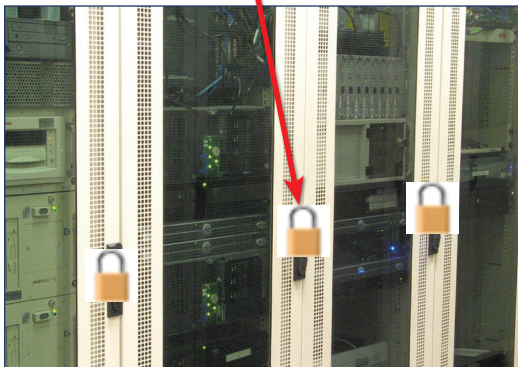
The Location Graphics enhancement module for CyberAudit Enterprise enables users to directly pinpoint where CyberLocks and Communicators are located – visually. Icons of CyberLock devices may be placed on maps or photos to illustrate where they are located throughout a building, city, state, or country.



A landscape view allows you to locate CyberLock devices in multiple locations. To view a specific location, simply click and zoom in. Maps and photos can be uploaded.



An embedded floor plan graphic allows you to locate CyberLock devices within a specific location. To view a specific device, simply click and zoom in. By viewing the floor plan you can spot 'holes' in access control implementations.

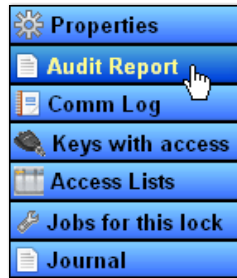


An embedded photo may display individual lock placements. Both horizontal and vertical images can be uploaded.

From an item icon you can . . .

Click to view lock details such as the audit trail or view a list of who has access to a lock

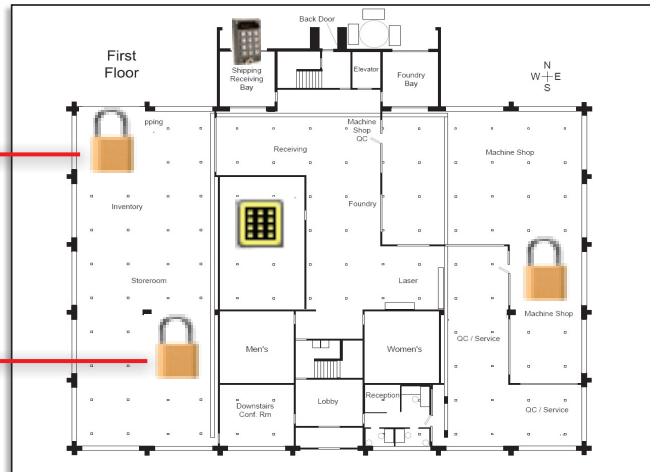
Click to view authorizer details such as network settings and properties



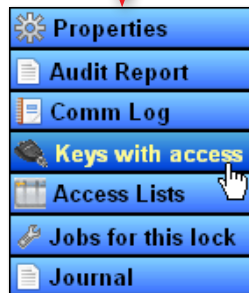
Audit Trail for lock Electrical Cabinet HV1 (Serial #L412CD829)
 3/17/2011 1:55:13 PM
 Pacific time(US+Canada);Tijuana
 33 events

| Person | Key | Download Date | Source | Event ? | Date |
|--------------------|--------------------------------|----------------------|--------|------------------------|----------------------|
| Andy Nelson | Andy Nelson (K47E82380) | 2/23/2010 9:47:17 AM | key | Authorized to open (b) | 2/23/2010 9:46:46 AM |
| Barb Kinston | Barb Kinston (M22685839) | 2/23/2010 8:45:24 AM | key | Authorized to open (b) | 2/23/2010 7:45:08 AM |
| Andy Nelson | Andy Nelson (K47E82380) | 2/23/2010 8:44:12 AM | key | Authorized to open (b) | 2/23/2010 6:43:46 AM |
| Charlie Bellforest | Charlie Bellforest (K47E81F59) | 2/23/2010 7:40:14 AM | key | Authorized to open (b) | 2/23/2010 8:38:12 AM |
| Darla Page | Darla Page (K47E81F8F) | 2/22/2010 9:58:28 PM | key | Authorized to open (b) | 2/22/2010 7:55:30 PM |
| Adam Evening | Adam Evening (K4652FB4B) | 2/22/2010 7:50:42 PM | key | Authorized to open (b) | 2/22/2010 6:46:52 PM |
| Charlie Bellforest | Charlie Bellforest (K47E81F59) | 2/22/2010 7:49:20 PM | key | Authorized to open (b) | 2/22/2010 4:46:50 PM |

Click to view the audit trail of each lock



Click to view keys with access



People With Access To Lock Electrical Cabinet HV1
 3/17/2011 1:47:36 PM
 Pacific time(US+Canada);Tijuana
 4 records

| Person | via Schedule | using Tag | Access Details |
|--------------------|----------------------------------|------------|-------------------|
| Barb Kinston | M-F 5 am - 6 pm Holidays 7am-4pm | Electrical | Scheduled Access |
| Andy Nelson | M-F 5 am - 6 pm Holidays 7am-4pm | Electrical | Scheduled Access |
| Charlie Bellforest | Full Access | | Master Key Access |

How to Get Started

Location Graphics is an add-on module for CyberAudit Enterprise. To add this functionality, contact your local CyberLock reseller, or contact CyberLock, Inc. at 541-738-5500 or sales@cyberlock.com.

CyberLock, Inc.

1105 N.E. Circle Blvd., Corvallis, OR 97330

541-738-5500 • Fax 541-738-5501 • www.cyberlock.com • sales@cyberlock.com • support@cyberlock.com

CyberLock and CyberAudit are registered trademarks of Videx, Inc. GCO3368